

Wade Institute for Science Education
1354 Hancock St., Ste. 302
Quincy, MA 02169
www.wadeinstitutema.org

NON PROFIT ORG
US POSTAGE
PAID
BOSTON MA
PERMIT NO. 50233

Learn About Climate Change From Scientists and Experts!

Wade Institute for Science Education

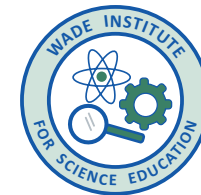
Our Climate, Our Communities: Science, Systems, and Solutions

A Hybrid Professional Development
Institute for Middle and
High School Educators



February 24th - May 8th, 2020

Join us for a combination of online and on-site sessions!



Our Climate, Our Communities: Science, Systems, and Solutions

A Hybrid Professional Development Institute for Middle and High School Educators

What is the Wade Institute for Science Education?

The Wade Institute for Science Education is a nonprofit dedicated to hands-on, minds-on, inquiry-based science education. We connect classroom teachers and informal educators with science, technology and engineering content expertise, inquiry-based instructional methods, regional STEM resources, and peer learning communities. We help educators discover firsthand the value of inquiry-based learning, and master innovative ways to spark students' curiosity for STEM.

Registration Information

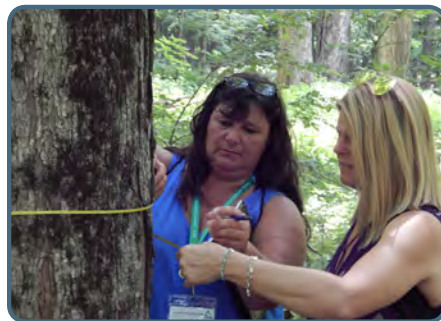
Online Dates:

February 24th-May 8th, 2020

On-Site Saturday Dates:

February 29th, March 21st, April 11th, May 2nd (9:00 am - 3:30 pm)

On-site dates will be held at Mass Audubon's Broad Meadow Brook Wildlife Sanctuary in Worcester, MA.



Cost:

\$425/participant; \$400/participant if attending with one other teacher from your district; \$375/participant if attending with two or more other teachers from your district.

PDPs and Graduate Credit:

40 PDPs available without graduate credit. 67.5 PDPs and 3 graduate science credits from Cambridge College available for an additional \$225.

Registration Deadline: Friday, February 14th

Explore examples of best practices in climate change education. Experience a hybrid format of in-person and online learning that provides opportunities for you to engage in climate and alternative energy investigations, work directly with scientists and engineers, explore regional resources, and develop investigations you can use in your classroom.

At Mass Audubon's Broad Meadow Brook Wildlife Sanctuary, collect sample data about changes in plant and animal life cycles occurring in Massachusetts, review current scientific research into changing wildlife populations, learn of opportunities to engage your students in citizen science, and try out evidence-based investigations vetted by scientists and educators. Discuss the power of transdisciplinary thinking with UMass Boston Professor Bob Chen. Discover how wildlife observations reveal impacts of changing patterns of temperature and rainfall with Mass Audubon's **Joan Walsh**. Learn how paleoclimate research informs our knowledge of feedbacks to the climate system with Resource Economist **Gene Fry**. Talk with Chemical Engineer **Richard Rys** about his vision for how Massachusetts could meet all of its electricity demands with renewable energy. Explore the connections between plant health, soil health, carbon sequestration, and human health with organic farmer **Dan Kittredge** of the Bionutrient Food Association.

Explore climate change issues as you collect and analyze climate change data relevant to your community. Explore potential impacts of temperature and precipitation on food webs. Learn about efforts to use agriculture to address rising carbon dioxide levels and carry out an investigation of the mutualistic relationship between soil fungi and plant growth. Leave the course with tools and resources for integrating climate change concepts into your instruction and the confidence to engage your students in active discussion and problem solving.

Visit www.wadeinstitutema.org to learn more about this program, and to register!